

Axciscape Drawing Entities – Outline

OUTLINE

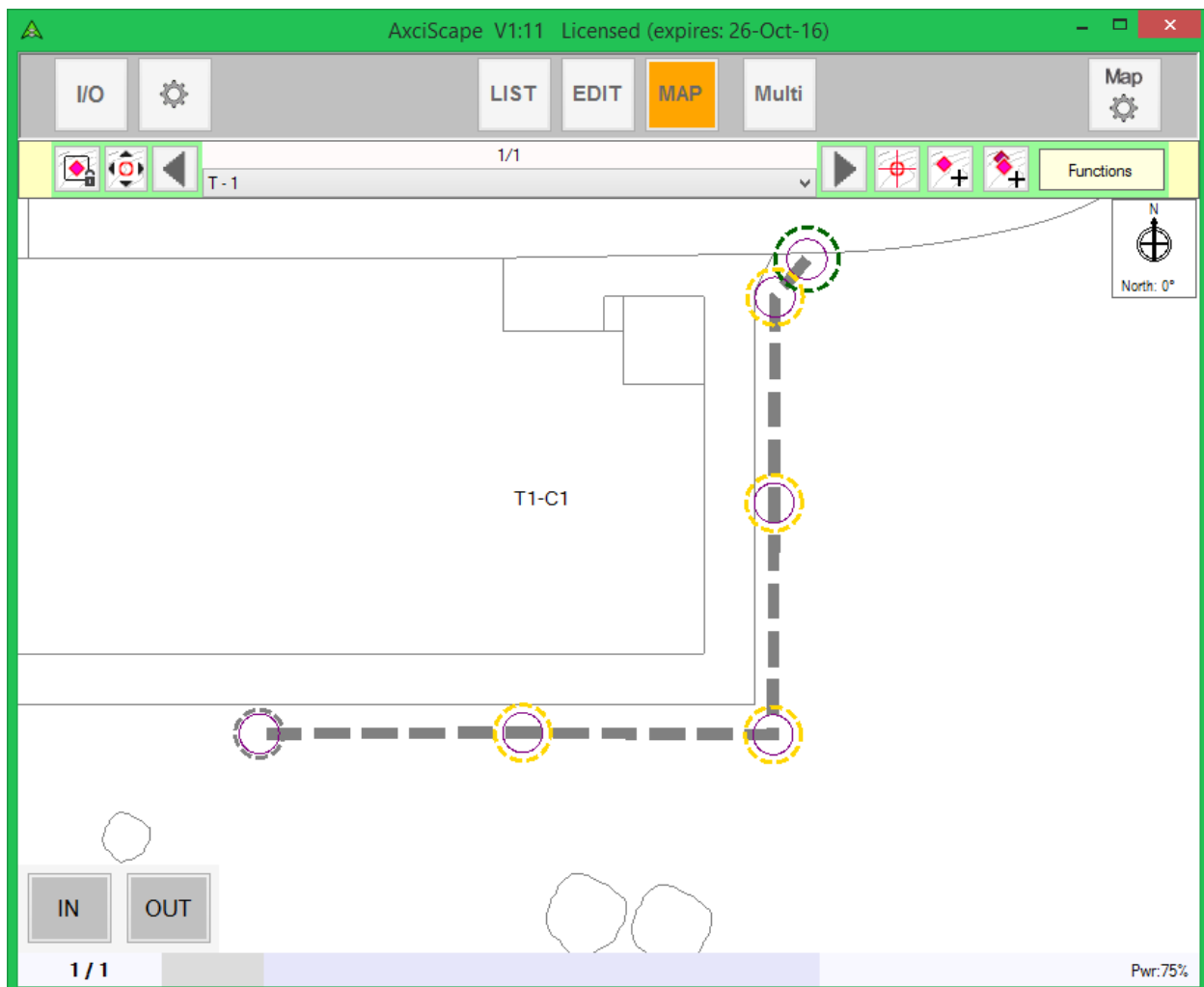
The Outline function draws a closed polyline (closed means the 1st vertice is joined to the last) around the objects map vertices.

The distance of the line from each vertice is defined in the usual way and can be a field value or an absolute number (e.g 6)!

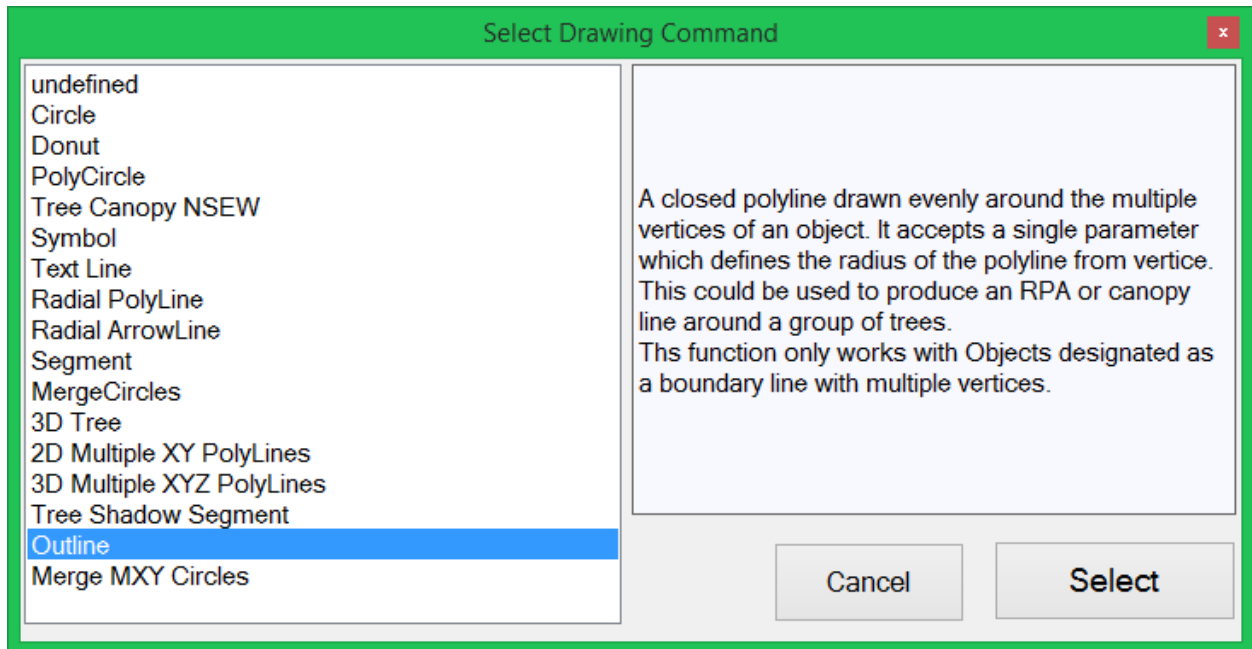
Outline only works with an object which has multiple vertices and which are shown as a boundary line.

For tree work, 'Outline' could be used to create an RPA line around a group of trees or a hedgerow. It could also be used to draw a canopy line.

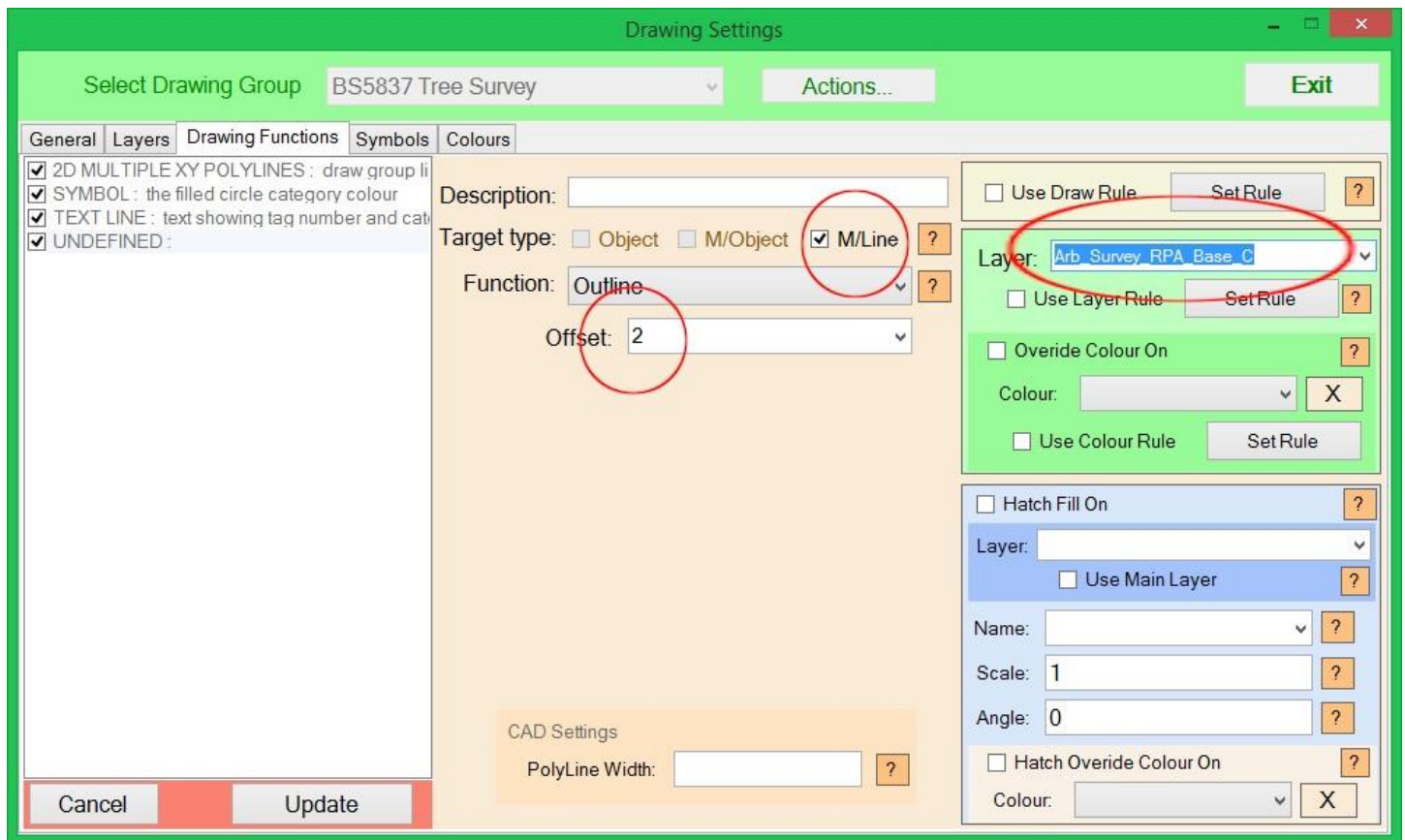
The following example uses an object plotted as an OPEN-ENDED line. It represents the centerline of a hedgerow and consists of 6 vertices. I am going to draw an outline around the hedge at a distance of 2m to represent say... a root protection zone.



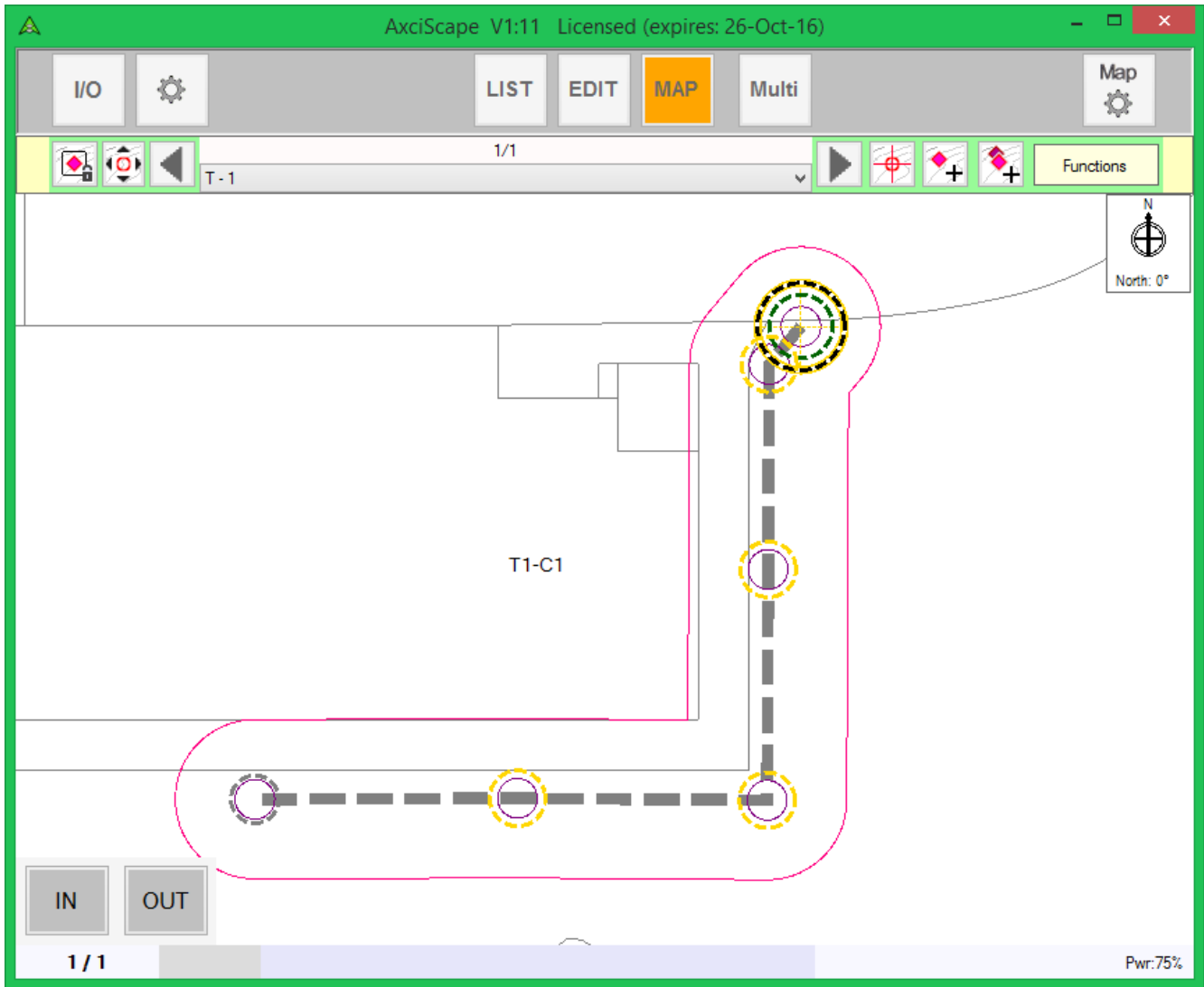
I enter the map settings window and ADD a new OUTLINE drawing function by selecting it from the menu.



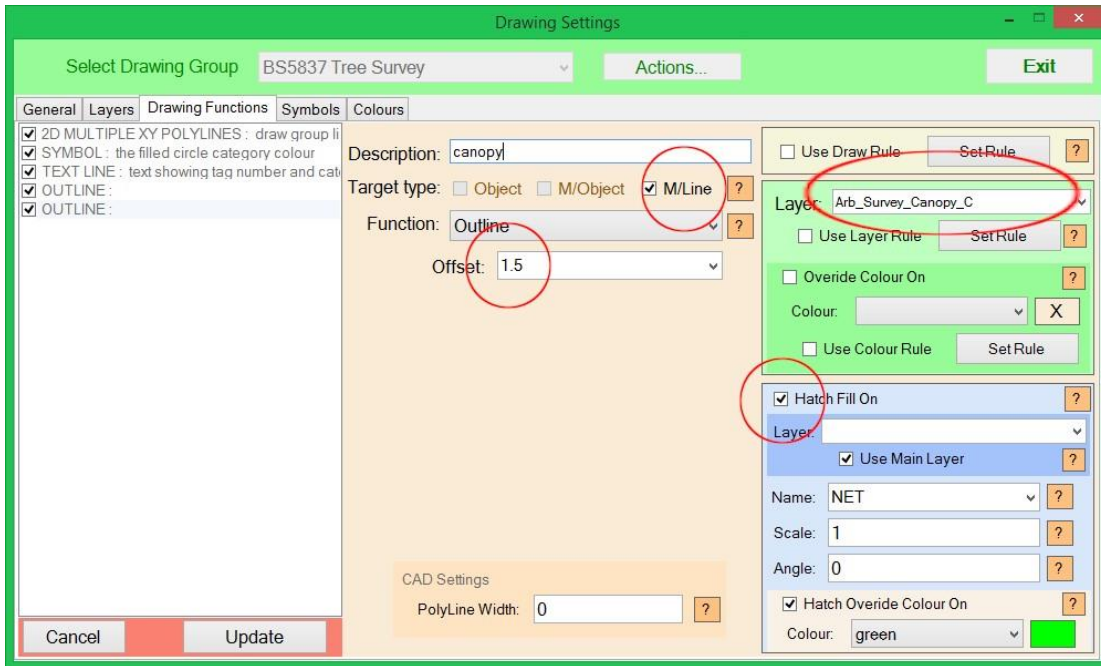
I now set my offset value to 2 and select the layer which I wish to use. The layer controls the outline colour which in this case is magenta (pinkish)!



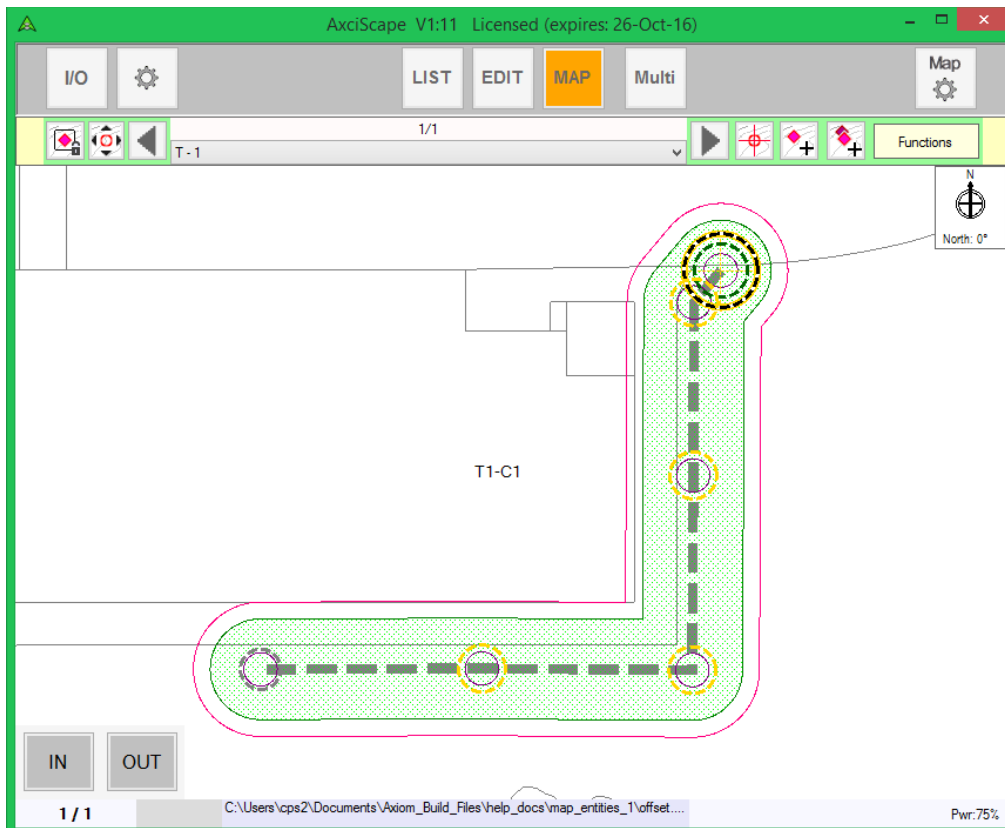
On returning to the map screen you can now see the outline drawn evenly around the group.



For fun I have created another Outline function, set the layer to use a tree canopy layer and given the offset a value of 1.5 to represent the hedge canopy. I have also set the hatch to be active based on the same layer but with a lighter green override.



And the results below.



Of course I could have used fields to generate the offset values. The RPA offset can be linked to the RPR calculation in the template and the canopy could use one of the NSEW fields.

When using offset lines it's important to think a head when plotting say a hedgerow on site. It would be best to just plot the centerline of the hedge and record the average canopy radius.

The above example used an open ended plotted line. When using a CLOSED line it works in much the same but again you need to think about what the line actually represents with regards to the group. To use RPA and Canopy outlines with a closed group you need to ensure your plotted line represents the limits of the tree stems and not say the canopy edge.

I have plotted an example 'closed line' below using the same settings as before.

