

# Exporting Text with Axciscope

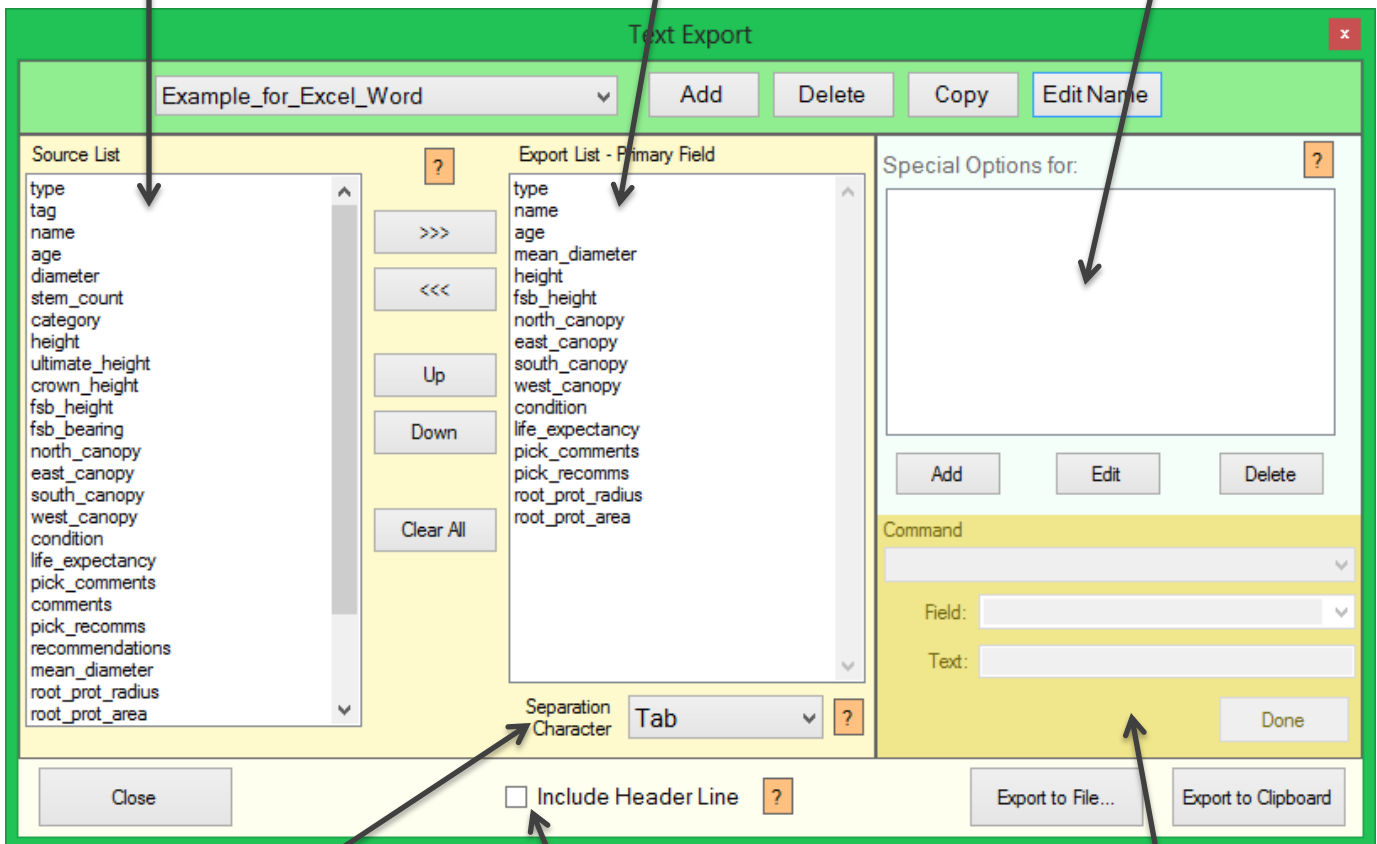
This document runs through the options that are available with Export. It uses the demo BS5837 database as its example and also the included export field settings 'Example\_for\_Excel\_Word' as a basis.

## The main window

The existing template field list. Highlight a field and use the >>> button to transfer its name into the Export List.

The Export Field List. This is the order in which data will be compiled. Highlight a field and use the Up/Down buttons to reorder and the <<< button to remove.

The Special Options List. This contains any special instructions you may wish to apply to each of the fields contained in the Export Field List.



Decide here what character you wish to use to separate each field. If intend to use the export text in Excel you would normally use a TAB.

If you want the first line of the export text file to include header titles, select this box.

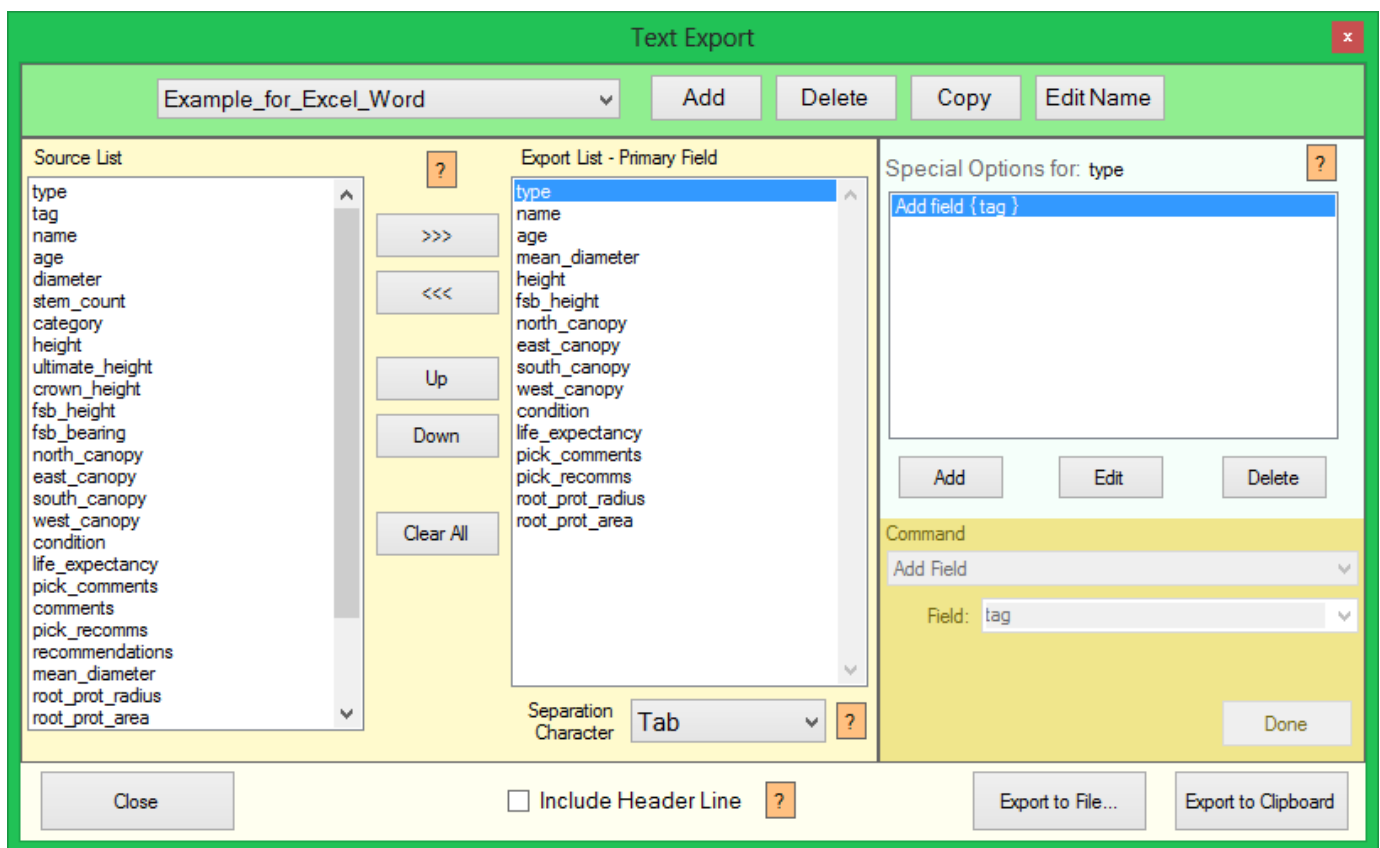
These edit boxes enable the special option items to be edited.

## Simple Exporting

So to carry out a simple export it's just a case of transferring Fields from the Source List on the left into the Export list in the middle using the >>> button. Arrange them in the order you want and hit the Export buttons. For speed of use, just 'Export To Clipboard' and then use paste to transfer the text straight into Excel, Word, Notepad etc.

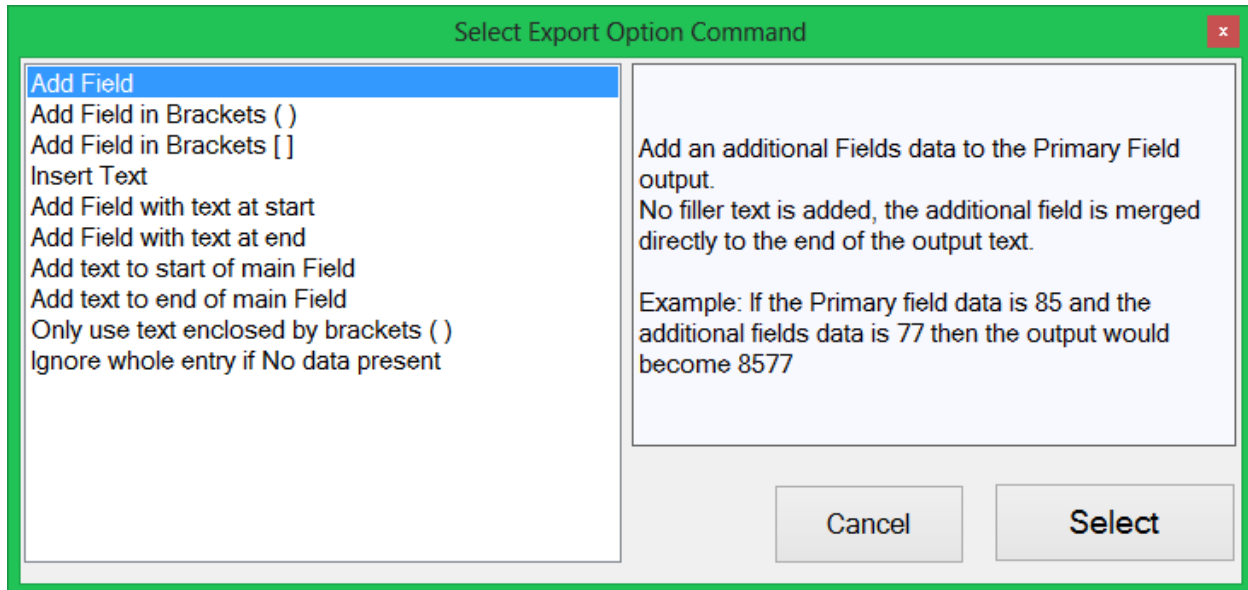
## Special Field Options

Sometimes you may wish to modify the export text by merging fields, adding brackets etc. The options panel gives access to a number of possibilities. For example, in the supplied example export filter such an option is used for the tree tag number. You may have noticed that 'Tag' is not present in the export field list (see below).



But 'Tag' is present as an option for the 'Type' field. I have clicked on the Type field above and you can see an option has appeared in the right-hand list. By clicking on this option, its command variables appear in the text boxes below the list. In the above example I am simply asking the program to add another field (tag) directly to the Primary field (type). During the export build process the two fields will be joined to give something like T187. If I left out this option I would just get a T!

Clicking on the options 'Add' button brings up a selector box inviting you to choose the option you require.



### Option Descriptions

Before I describe them in detail you need to know about the 'Primary Field Output'. This is the build text string for the current export field being processed. It starts with the data contained by the Primary field (the one listed in the export field list). Every option in the option list modifies this string. So, adding a field places the new field data to the end of the primary text string etc. You can have as many options in place as required.

**Add Field:** Simply adds a field to the back of the primary field output text.

**Add Field in Brackets:** The same as Add Field but puts them inside a pair of brackets ( ) or [ ]. So using our T187 example it would like T(187) or T[187] for this option! This is however a useful option for putting say a stem count in brackets after a diameter field or a crown height in brackets after a tree height value.

**Insert Text:** Add any text such as a space onto the end of primary string.

**Add Field with Text at Start/End:** Adds a field and also inserts the defined text in front or behind the added field.

**Add Text to Start/End of Main Field:** Adds any defined text to the front or back of the primary field ignoring what's already been added so far. It will be merged directly to the primary field data.

**Only Use Text Enclosed by Brackets:** This tells the program to look through the primary field text and extract any text enclosed by a pair of brackets. So if I had the field data 'Quercus robur (Common oak)' contained within a name field, this option would extract the 'Common oak' text and only use that for export.

**Ignore Whole Entry If No Data Present:** This will export nothing for this primary field (including any defined options) if no data is found inside the primary field. This could be used if, for example, I have used an option to put 'Recommendations:' in front of the primary field. I don't want this text appearing for every tree that hasn't actually got any recommendations.