

## Axciscape Drawing Entities – Merge Canopy

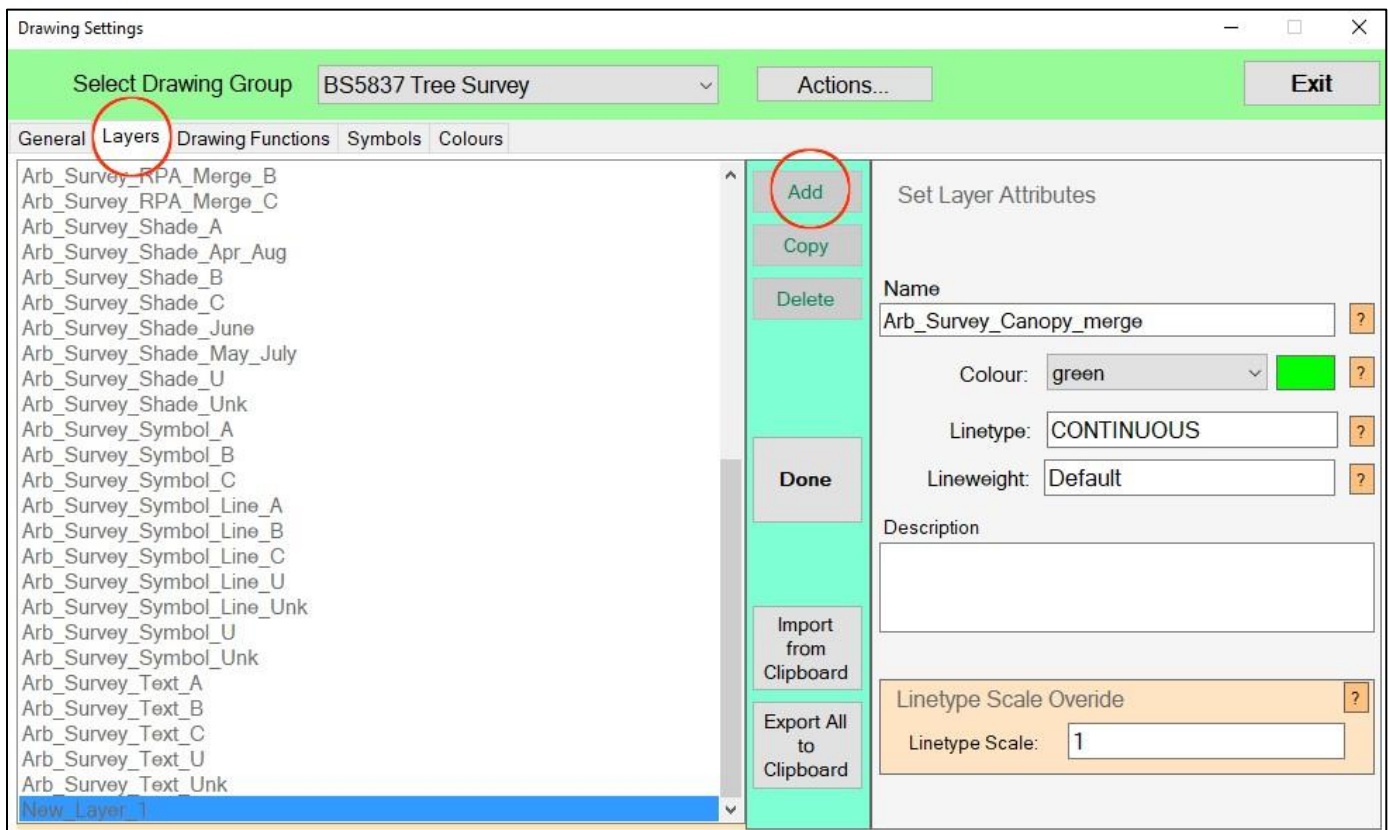
### MERGE Canopy

This function draws a closed polyline around overlapping canopies which have been drawn using the Canopy function.

To begin, click the Map settings icon on the main screen and then the Drawing Settings button.

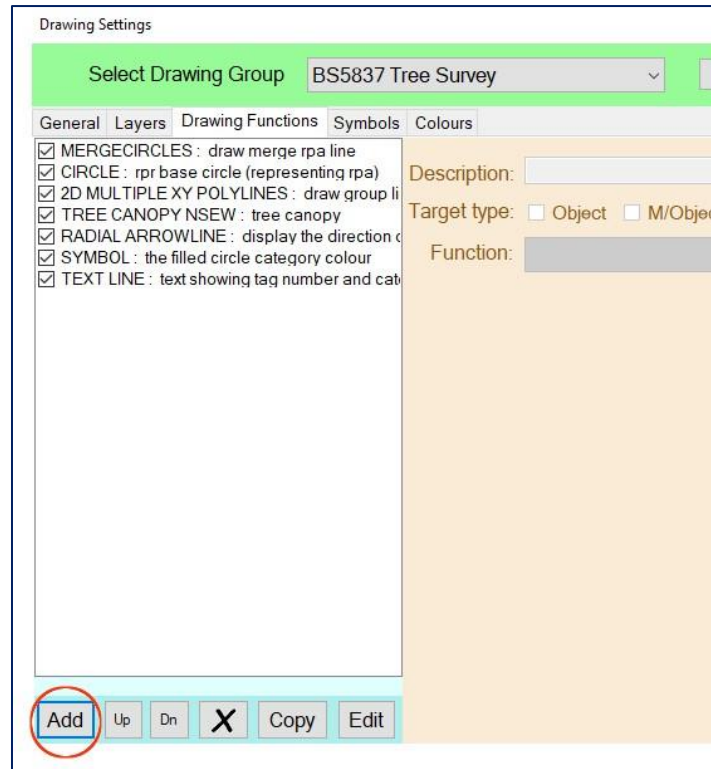
I will first show how to add a layer to hold our merged canopies.

Click the Layers tab, and then the Add button. Enter the name for the layer, select the colour and click Done.

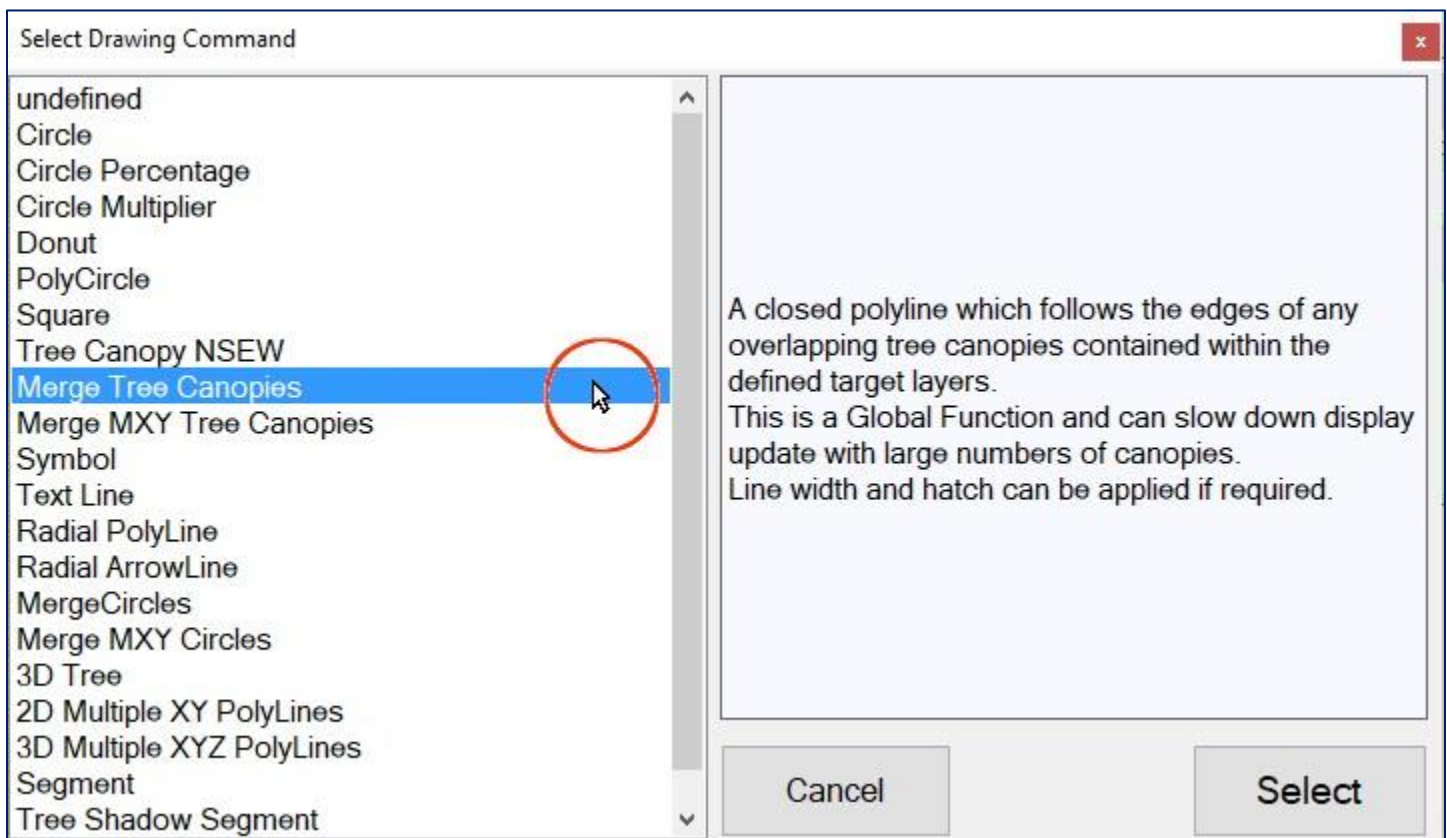


And that's a layer ready. The layer should appear in the list.

Next job is to go to the Drawing Functions tab and select Add.



A selector box will appear. Select the Merge Tree Canopies function and hit the Select button.

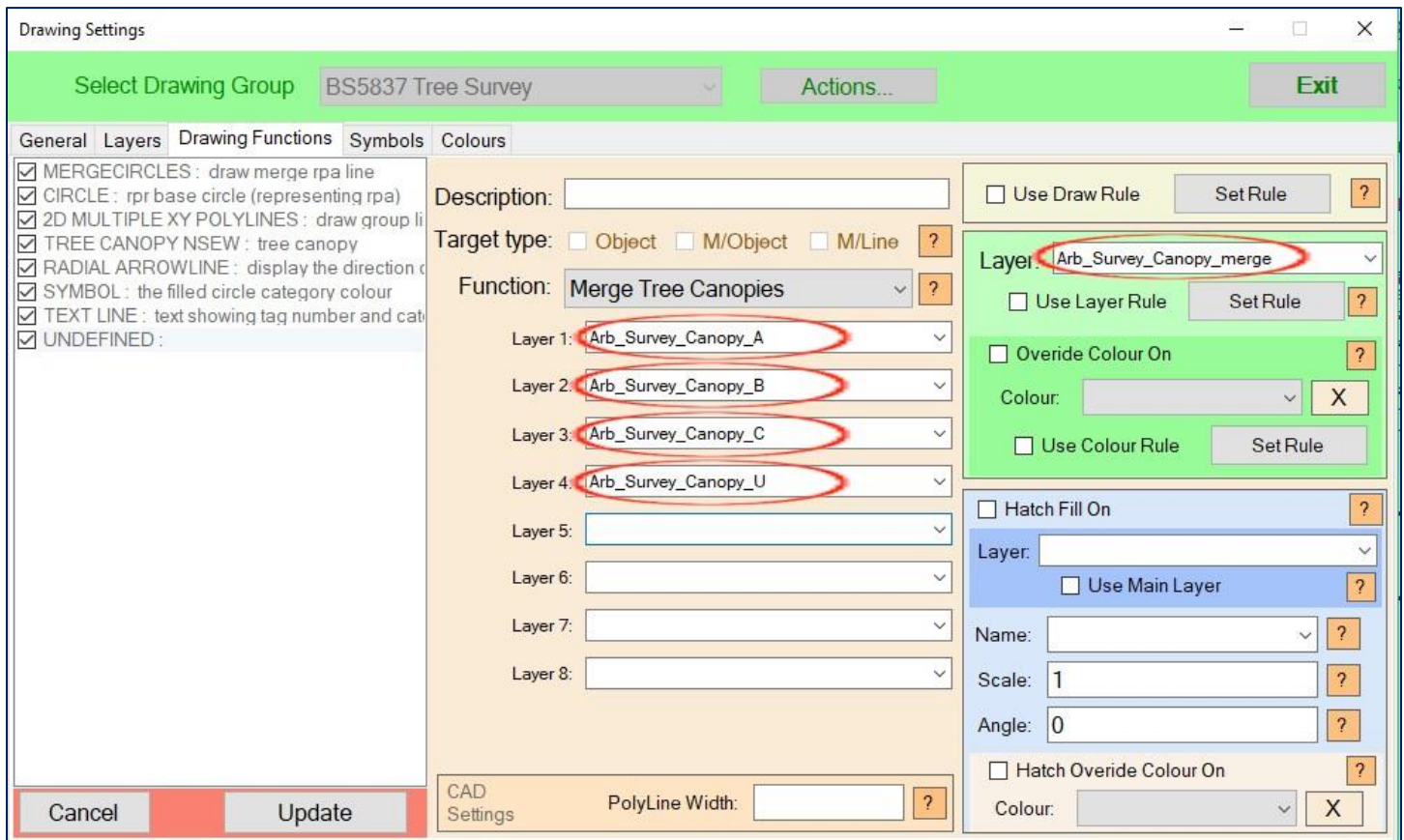


Now we need to set the layer which the merged canopies will use, so select on the right hand upper box the layer we made earlier.

The merge function uses the normal canopy function to work so it needs to know which layers these canopies are using. You can select between 1-8 layers. I have selected 4 in the image below which means any canopies using these 4 layers will be merged together.

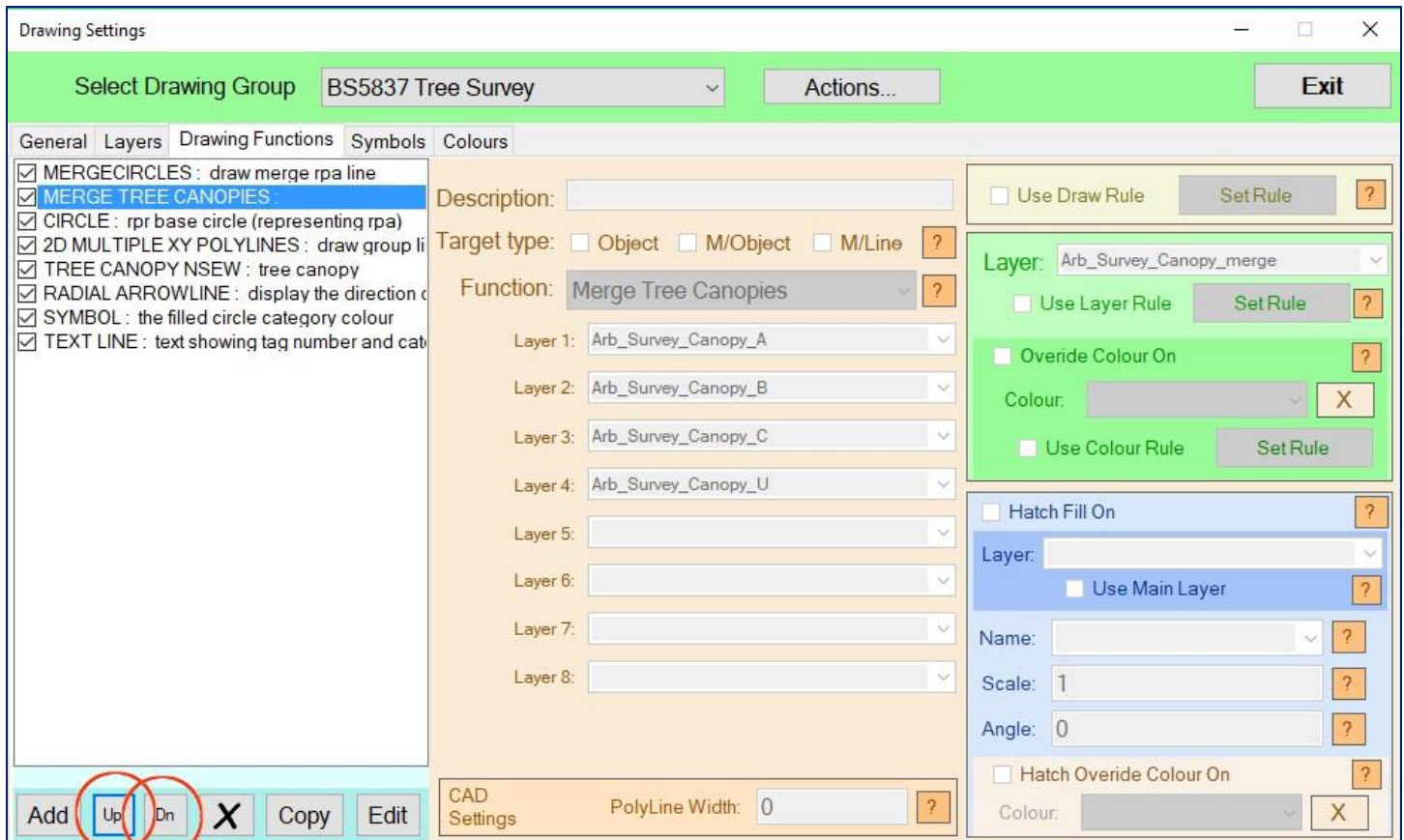
You can select other properties as required. The Polyline width will make the merge line thicker. Be careful as this uses meters so putting 1 will make a 1m wide line! A more usable value is 0.1 so 100mm wide. I normally leave it blank or set it to zero and adjust width within AutoCAD.

Once you are happy select the Update button.



Now, if you wish, you can use the Up/Dn buttons to move the function up the list so that the merge line is drawn before some other functions.

This way the canopy line will be behind text and symbols etc and will look tidier!



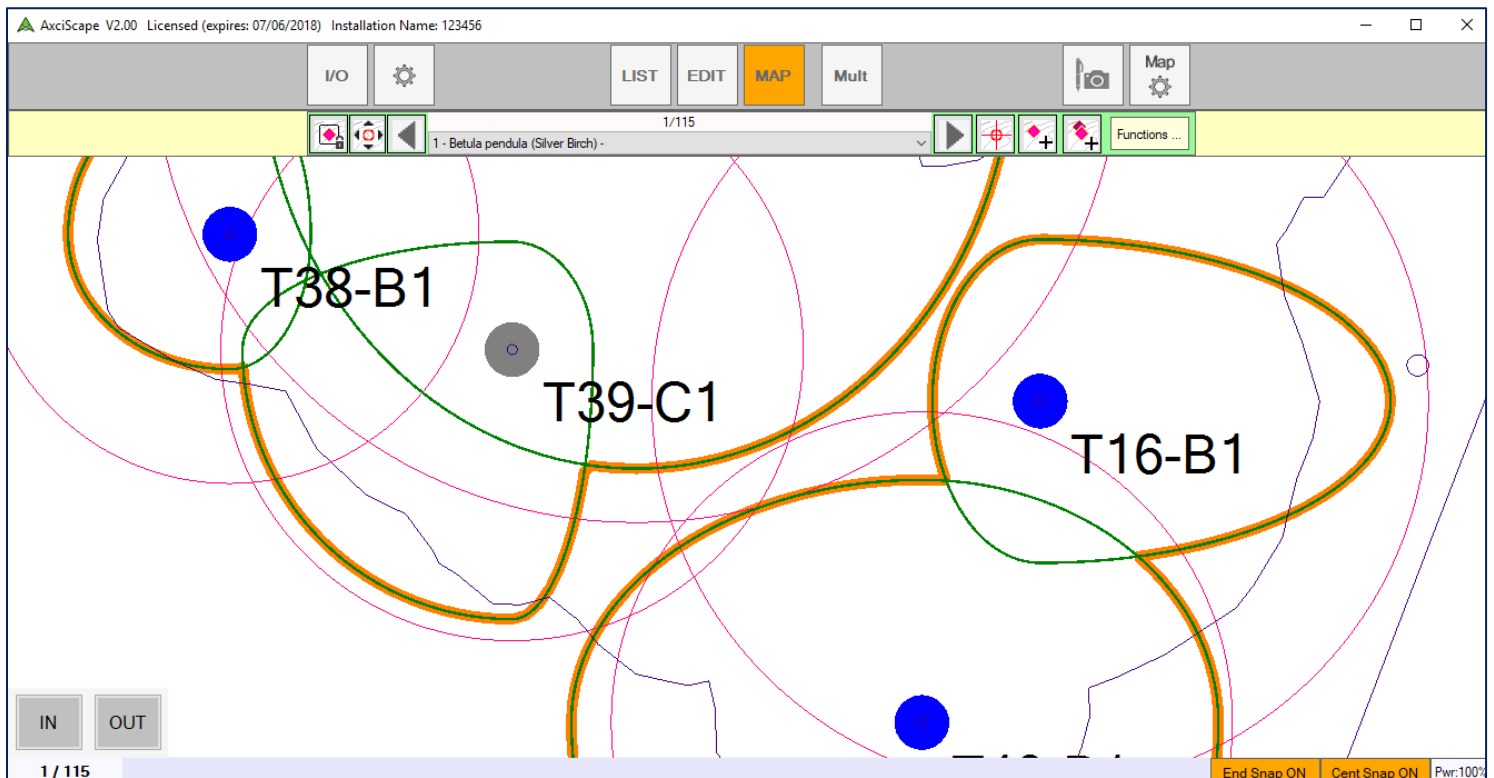
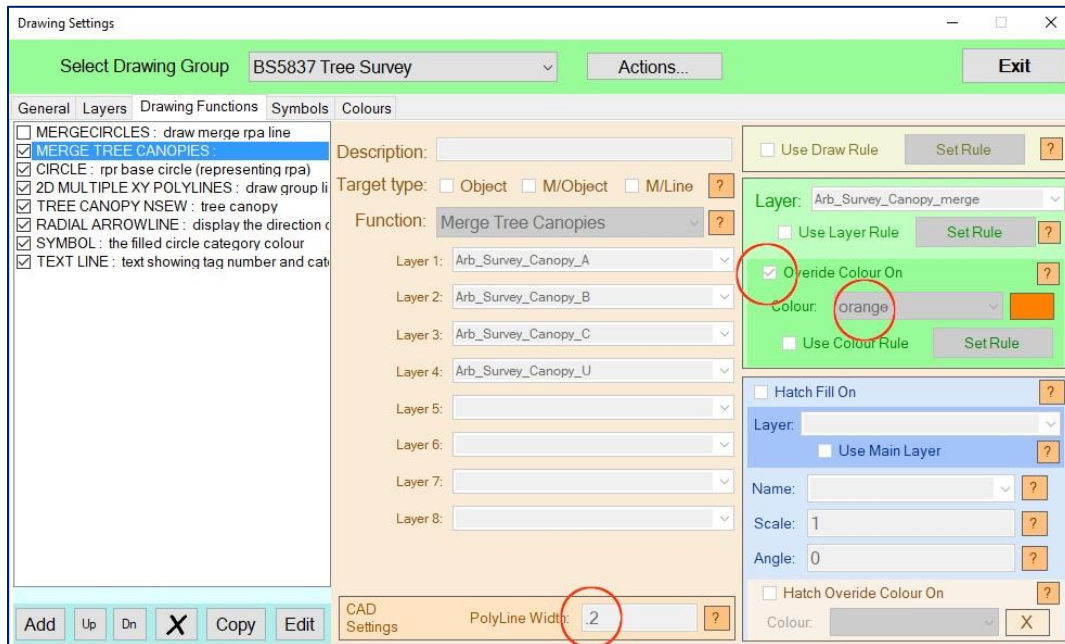
And that's it.

One important point is that the single tree canopy functions have to be active for the merge function to work. Once drawn to CAD you can then switch off the single canopy layers to just leave the merge line visible.

For those who would like to separate merged canopies by their category you will need to make 4 new layers and label them something like 'Arb\_Survey\_Canopy\_Merge\_A'. And then for B, C, U. And then you would need to create 4 Merge Canopy functions with one for each category. And each function will have just 1 layer in its target list.

**Important:** The merge canopy function is generally quite reliable. However, it has failed to draw in a couple of situations where a multitude of canopies overlapped each other. A warning should appear if such a problem occurs.

It can be hard to see the merge line on Axciscape if it's the same width and colour as the single canopies. So just as an example I have added some width to my merge line and coloured it orange.



And because I placed the merge canopy function above the single canopy in the function list it is drawn before them.